

# SANTA MARÍA SEA BY TM

Costa de Valencia / El Puig

## URBANISATION



**1, 2 and 3 bedroom apartments, penthouses and single-family semi-detached homes on El Puig beach, Valencia**

Santa María Sea by TM sits 150 metres from El Puig beach, has direct access to the promenade and is just 14 minutes from Valencia city centre. The development will have 1, 2 and 3 bedroom apartments, 2 and 3 bedroom penthouses and 3 bedroom single-family semi-detached homes. All the properties have a parking space with connections for a future charging point for electric vehicles and a storage room.

## THE SURROUNDING AREA



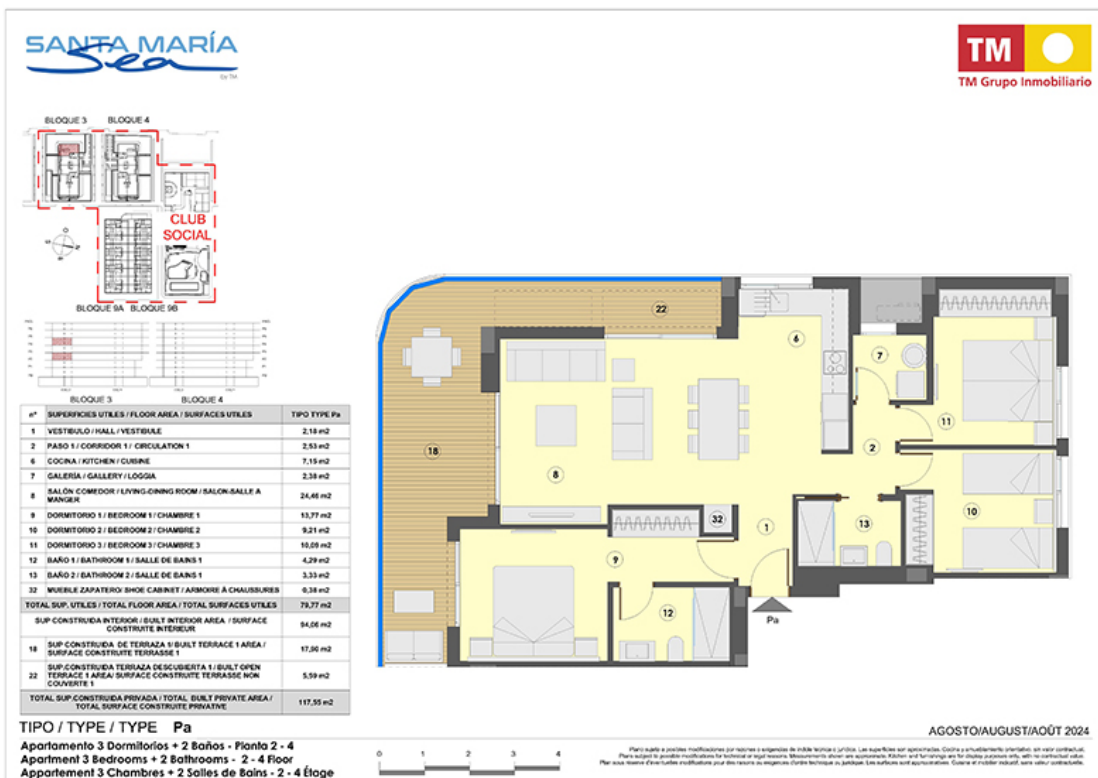
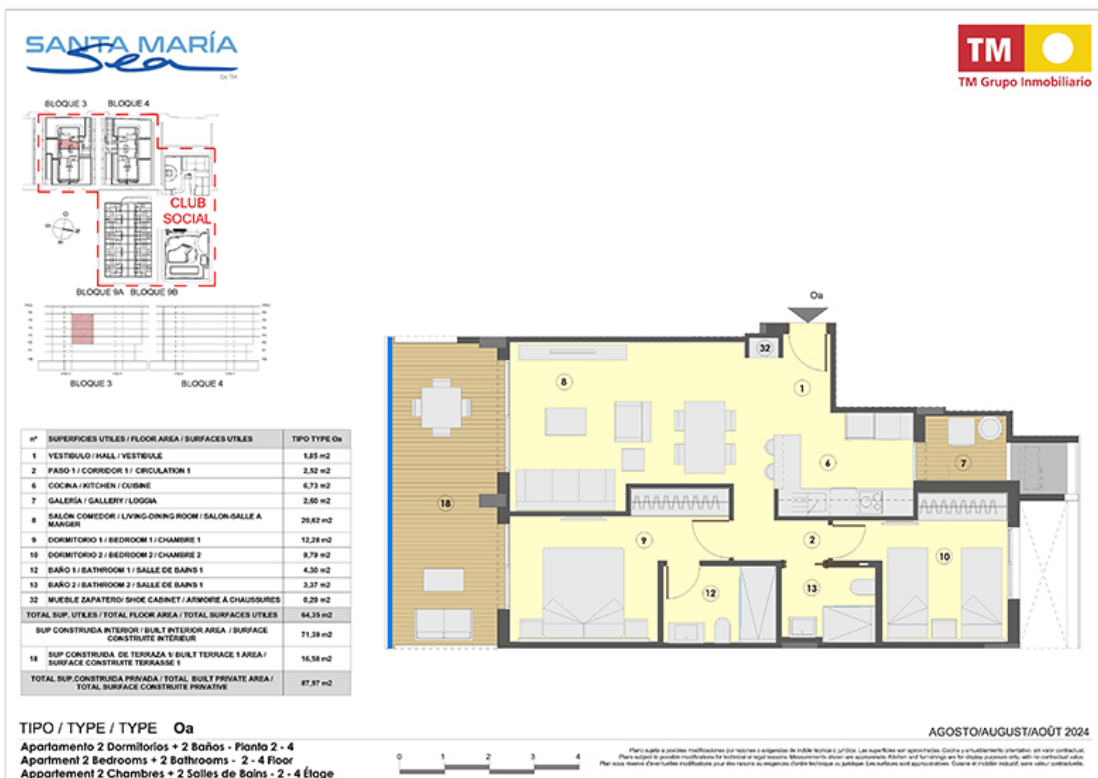
### The Beaches

The beaches along the Valencia coastline stand out for their fine sand and crystal-clear waters. There are walkways provided along the entire coastline with services and most of the beaches hold a blue flag. Les Pedretes beach sits opposite the Santa María Sea by TM development. It is a very large beach formed by a series of coves, separated by breakwaters, and bordered by a long promenade with gardens and palm trees. Puzol beach is over 2 kilometres long and offers fine golden sand, a blue flag and a promenade with various services. La Pobla de Farnals is an urban beach with fine golden sand. It has a promenade, a blue flag, all the services and a marina. Cool down at one of these beaches next to the development!

### Amenities

Valencia is one of the best places to live thanks to its Mediterranean climate all year round, its economic and social stability, its rich history and cultural life and its Mediterranean food. There are all kinds of services in the El Puig area: shops, entertainment, restaurants, education, hospitals and health centres, along with very good connections. What's more, the train station is 4 km from Santa María Sea by TM; Valencia Airport is less than 30 km away; and the seaports of Valencia and Sagunto are very close to the new development by TM Real Estate Group. Your lifestyle, allowing you to enjoy the Mediterranean like never before, at Santa María Sea by TM.

## PLANS



## AERIAL VIEW





**SANTA MARÍA**  
Sea

**TM**  
TM Grupo Inmobiliario

51	PISCINA ADULTOS CLIMATIZADA / HEATED ADULT POOL / PISCINE CLIMATISEE ADULTES
52	PISCINA ADULTOS / ADULT POOL / PISCINE ADULTES
53	GIMNASIO / GYM / GYMNASIUM
57	ZONA DE TUMBOS / SUNBED AREA / ZONE DE CHAISES LONGUES
58	JUEGOS INFANTILES / CHILDREN'S PLAY AREA / JEUX POUR ENFANTS
62	PISTA POLIVALENTE / MULTI-SPORTS COURT / TERRAIN DE SPORT POLYVALENT
63	PISTA PADDELE / PADDELE TENNIS COURT / COURT DE PADDELE
65	PISCINA INFANTIL / CHILDREN POOL / PISCINE ENFANTS
66	ENTRADA / ENTRANCE / ENTREE
67	ENTRADA APARCAMIENTO / PARKING ENTRANCE / ENTREE DU PARKING
72	ZONA VERDE / GREEN AREA / ZONE VERTE
75	ASEOS / WC / TOILETTES
76	APARCAMIENTO BICIS / BIKE PARKING / PARKING A VÉLOS
78	BÚZONES / MAILBOX / BOITE AUX LETTRES
81	SALIDA APARCAMIENTO / PARKING EXIT / SORTIE DU PARKING
90	DUCHAS / SHOWER / DOUCHES
95	PARKING EXTERIOR / EXTERIOR PARKING / EXTÉRIEUR PARKING
103	SALA COQUINING / COQUINING ROOM / SALLE DE COQUINING
137	PLAYA PISCINA (DESPEJ) / BEACH POOL GRASS / HERBE DE PISCINE DE PLAGE
143	CASA GENERAL PROTECCIÓN / GENERAL PROTECTION BOAT / BOITE DE PROTECTION GÉNÉRALE
144	CONTADOR AGUA / WATER METER / COMPTEUR D'EAU

## MASTER PLAN

Fase 1  
Phase 1  
Phase 1

0 5 10 15 20

**BLOQUE 9A BLOQUE 9B**

AGOSTO/AUGUST/AOÛT 2024

Plano sujeto a posibles modificaciones por razones de seguridad o mejoras técnicas o jurídicas. La presente obra de urbanización se amolda a condiciones administrativas. Plans subject to possible modifications for technical or legal reasons. The present work of urbanization is adapted to administrative conditions. Plan soumis à des modifications possibles pour des raisons de sécurité ou d'améliorations techniques ou juridiques. Le présent ouvrage d'urbanisme est adapté à l'administration administrative.



## PROPERTIES AVAILABLE

Type	Bedrooms	Bathrooms	Price range	m2
Adosado	3	3	489.000€ - 524.000€	273 - 277
Apartment	1	1	233.000€ - 253.000€	78 - 90
Apartment	2	2	297.000€ - 490.000€	87 - 171
Apartment	3	2	379.000€ - 527.000€	111 - 256
Penthouse	2	2	466.000€ - 599.000€	164 - 219
Penthouse	3	2	535.000€ - 750.000€	236 - 254



Solicita información en la oficina de venta TM más cercana a tu domicilio o ponte en contacto con nosotros en el teléfono **902 15 15 12** o en la dirección de email **comercial@tmgrupoinmobiliario.com**

**TM GRUPO INMOBILIARIO**