

OCEAN DREAM

Costa Blanca Sur / Torrevieja (Alicante)

URBANISATION



New build apartments just 300 meters from the beach.

Ocean Dream by TM is located in the privileged area of Rocío del Mar-Punta Prima: next to the Lo Ferris Protected Natural Area, just 300 meters from Cala Piteras beach and just 5 minutes from Torrevieja. The development will have a total of 36 apartments with 2 and 3 bedrooms with 2 bathrooms and with extraordinary sea views from most of them. The common areas will be located on the roof terrace, an ideal place to enjoy the best sunrise or sunset thanks to its 360° views. What do the common areas include? Infinity pool with 3 water beds, jacuzzi and chill out area. Make Ocean Dream by TM your home, where the sea and your dreams are one.

THE SURROUNDING AREA



The Beaches

Just 300 meters from Cala Piteras beach and 700 meters from Punta Prima beach. In addition, 3 minutes by car (± 3 km) we have Playa Flamenca.

Golf courses

In the area we have several golf courses, the closest being Villamartín Golf, just 5 km away, and also Campoamor Golf and Las Colinas Golf.

Amenities

Close to a wide range of services within walking distance such as restaurants, pharmacies and supermarkets. Just 5 minutes by car to shopping centres such as Zenia Boulevard and Habaneras. The development is located less than 45 minutes by car from Alicante Airport and Murcia Airport in Corvera

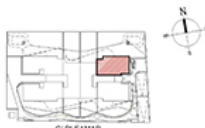
PLANS

OCEAN
DREAM

TM



TM Grupo Inmobiliario



Nº	SUPERFICIES ÚTILES / FLOOR AREA / SURFACES UTILIS	TIPO / TYPE	A.a
1	VESTIBULO / HALL / ENTRÉE		2,85 m ²
2	PASO 1 / CORRIDOR 1 / CIRCULATION 1		3,10 m ²
7	GALLERIA / GALLERY / GALLERIE		2,52 m ²
8	SALÓN COMEDOR COCINA / LIVING-DINING ROOM KITCHEN / SALON-SALLE A MANGER CUISINE		29,50 m ²
9	DORMITORIO 1 / BEDROOM 1 / CHAMBRE 1		12,61 m ²
10	DORMITORIO 2 / BEDROOM 2 / CHAMBRE 2		9,70 m ²
12	BANO 1 / BATHROOM 1 / SALLE DE BAINS 1		4,19 m ²
13	BANO 2 / BATHROOM 2 / SALLE DE BAINS 2		3,68 m ²
	TOTAL SUP. ÚTILES / TOTAL FLOOR AREA / TOTAL SURFACES UTILIS		68,15 m ²
	SUP. CONSTRUIDA INTERIOR / BUILT INTERIOR AREA / SURFACE CONSTRUITE INTERIEUR		80,11 m ²
16	SUP. CONSTRUIDA PORCHE / BUILT PORCH AREA / SURFACE CONSTRUITE PORCHE		15,48 m ²
	TOTAL SUP. CONSTRUIDA PRIVADA / TOTAL BUILT PRIVATE AREA / TOTAL SURFACE CONSTRUITE PRIVEE		95,59 m ²
	SUP. TERRAZA ENLOZADA		55,00 m ²
	SUP. JARDIN / GARDEN AREA / SURFACE JARDIN		97 m ²

TIPO / TYPE Aa

Apartmento, 2 Dormitorios + 2 baños + Planta Baja
Apartment, 2 Bedrooms + 2 Bathrooms + Ground Floor
Appartement, 2 Chambres + 2 Salles de bains + Rez-de-chaussée



NOVIEMBRE / NOVEMBER / NOVEMBRE 2022

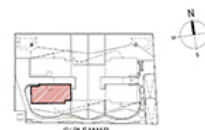
Plano sujeto a posibles modificaciones por razones o sugerencias de índole técnica o jurídica. Las superficies son aproximadas. Contra y emplazamiento orientados, sin valor contractual.
Plans subject to possible modifications for technical or legal reasons. Measurements shown are approximate. Kitchen and furniture are for display purposes only, with no contractual value.
Plan soumis à modifications en fonction des besoins ou suggestions d'ordre technique ou juridique. Les surfaces sont approximatives. Cuisine et aménagement idéaux, sans valeur contractuelle.

OCEAN
DREAM

TM



TM Grupo Inmobiliario



Nº	SUPERFICIES ÚTILES / FLOOR AREA / SURFACES UTILIS	TIPO / TYPE	D.b
1	VESTIBULO / HALL / ENTRÉE		2,85 m ²
2	PASO 1 / CORRIDOR 1 / CIRCULATION 1		4,70 m ²
7	GALLERIA / GALLERY / GALLERIE		2,02 m ²
8	SALÓN COMEDOR COCINA / LIVING-DINING ROOM KITCHEN / SALON-SALLE A MANGER CUISINE		29,81 m ²
9	DORMITORIO 1 / BEDROOM 1 / CHAMBRE 1		14,00 m ²
10	DORMITORIO 2 / BEDROOM 2 / CHAMBRE 2		9,70 m ²
11	DORMITORIO 3 / BEDROOM 3 / CHAMBRE 3		9,04 m ²
12	BANO 1 / BATHROOM 1 / SALLE DE BAINS 1		4,16 m ²
13	BANO 2 / BATHROOM 2 / SALLE DE BAINS 2		3,50 m ²
	TOTAL SUP. ÚTILES / TOTAL FLOOR AREA / TOTAL SURFACES UTILIS		80,68 m ²
	SUP. CONSTRUIDA INTERIOR / BUILT INTERIOR AREA / SURFACE CONSTRUITE INTERIEUR		95,52 m ²
16	SUP. CONSTRUIDA PORCHE / BUILT PORCH AREA / SURFACE CONSTRUITE PORCHE		20,82 m ²
	TOTAL SUP. CONSTRUIDA PRIVADA / TOTAL BUILT PRIVATE AREA / TOTAL SURFACE CONSTRUITE PRIVEE		116,34 m ²
	SUP. TERRAZA ENLOZADA		29,00 m ²
	SUP. JARDIN / GARDEN AREA / SURFACE JARDIN		36 m ²

TIPO / TYPE Db

Apartmento, 3 Dormitorios + 2 baños + Planta Baja
Apartment, 3 Bedrooms + 2 Bathrooms + Ground Floor
Appartement, 3 Chambres + 2 Salles de bains + Rez-de-chaussée



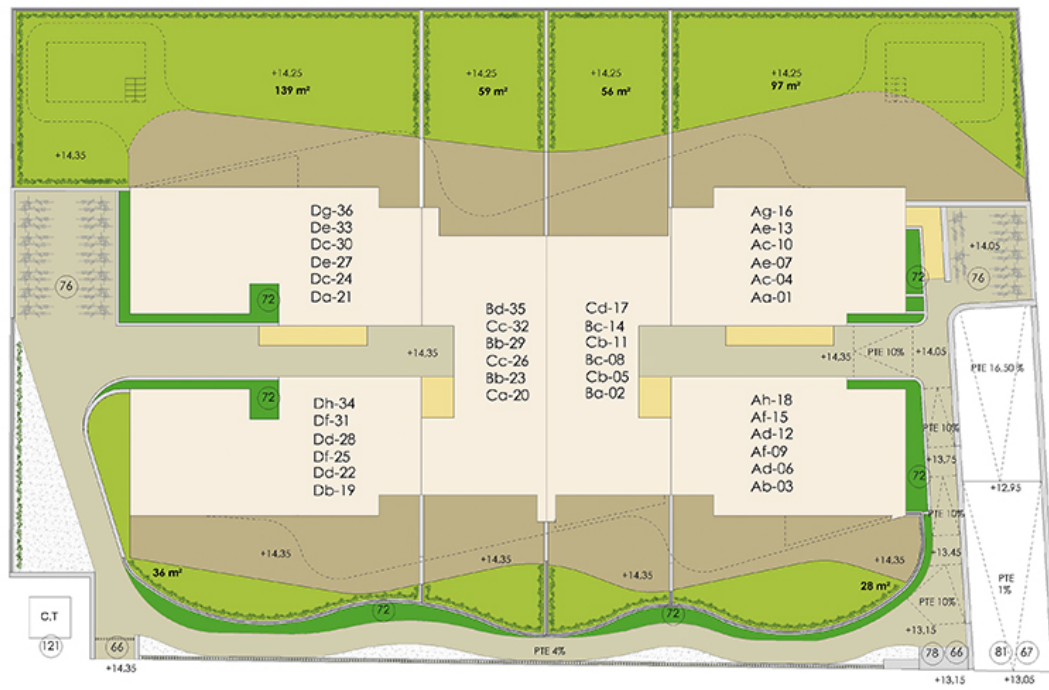
NOVIEMBRE / NOVEMBER / NOVEMBRE 2022

Plano sujeto a posibles modificaciones por razones o sugerencias de índole técnica o jurídica. Las superficies son aproximadas. Contra y emplazamiento orientados, sin valor contractual.
Plans subject to possible modifications for technical or legal reasons. Measurements shown are approximate. Kitchen and furniture are for display purposes only, with no contractual value.
Plan soumis à modifications en fonction des besoins ou suggestions d'ordre technique ou juridique. Les surfaces sont approximatives. Cuisine et aménagement idéaux, sans valeur contractuelle.

AERIAL VIEW



PLAN OF THE COMPLEX



C/ PLEAMAR



PROPERTIES AVAILABLE

Type	Bedrooms	Bathrooms	Price range	m2
Apartment	3	2	412.000€ - 478.000€	116 - 145



Solicita información en la oficina de venta TM más cercana a tu domicilio o ponte en contacto con nosotros en el teléfono **902 15 15 12** o en la dirección de email **comercial@tmgrupoinmobiliario.com**

TM GRUPO INMOBILIARIO