

ES MOLI DES TRENC 2ª FASE

Mallorca / Playa Es Trenc y Sa Ràpita

URBANISATION



Detached luxury villas in Sa Ràpita, close to the Sa Rapita – Es Trenc beach.

The Molí d'Es Trenc 2 residential complex has been designed in a modern way whilst seeking a connection with traditional Mediterranean architecture. Located just 100 meters from the Sa Ràpita Nautical club, and 300 meters from the Playa d'Es Trenc beach, all of the villas enjoy beautiful views of both the sea and the Maritime-Terrestrial Natural Park "Es Trenc Salobrar de Campos". A development of 14 luxury 2 or 3 bedroom semi-detached or detached villas with 3 bathrooms, large plots (up to 1300 square meters), each with a private pool in the garden and a closed garage or carport with independent access. The homes also stand out for their interior-exterior design, which, helped by the large windows and balcony windows, will allow the homes to have high luminosity, giving a special feeling of happiness, tranquillity and comfort.

C/ D'es Bosquerró. Urb. Son Durí. Sa Ràpita (Mallorca)

OPTIONAL FURNISHINGS



We offer you the possibility to enjoy your home from the moment you pick up your keys with a complete pack including all furniture and furnishings, a fully equipped kitchen with appliances and, of course, kitchenware and cutlery, cookware, tableware, bedding, TV, etc. so you don't have to worry about a thing!

THE SURROUNDING AREA



The Beaches

The project is only 300m from Sa Ràpita beach, which runs along to the Colònia de Sant Jordi, passing through Ses Covetes and Es Trenc. The Es Trenc beach is well-known for its 3km plus of white sand and crystal clear Caribbean-like waters.

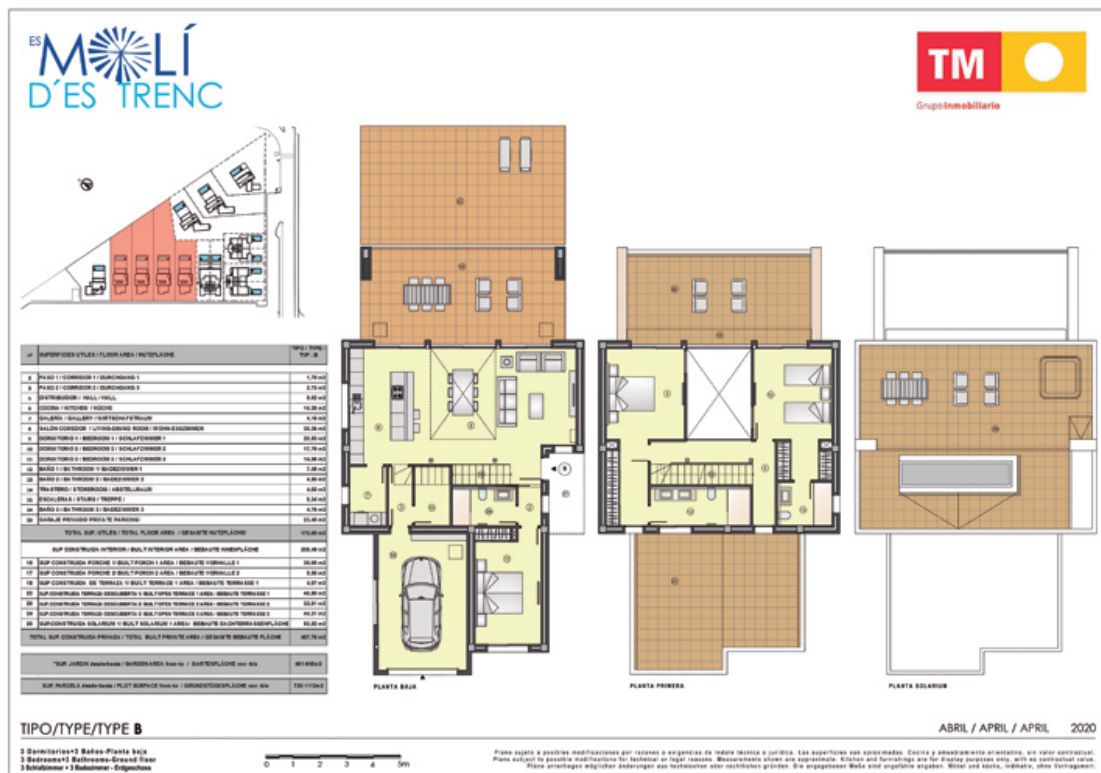
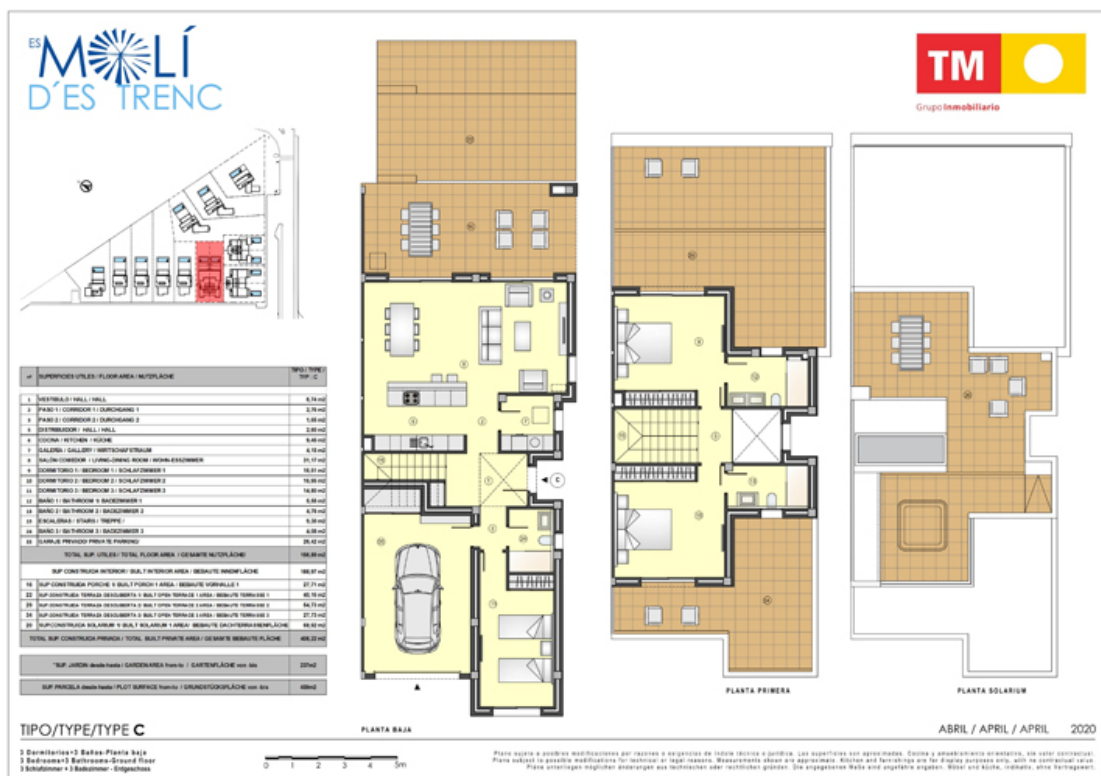
Amenities

In Sa Ràpita you can enjoy the typical island cuisine thanks to the wide choice of restaurants and bars with privileged locations facing the sea, along Avenida Miramar. There is also a small civic centre with a primary medical attention room and a Town Hall branch office. Along this same Avenida, about 4km away lies S'Estanyol, which belongs to the municipality of Son Bieló — a characteristic fishing village with a Boat Club of its own, and a few restaurants which are famous for their fresh fish.

Views from the properties

Depending on the location and orientation of your home, you'll have views of S'Estanyol beach and D'es Trenc beach.

PLANS



AERIAL VIEW



PLAN OF THE COMPLEX





Solicita información en la oficina de venta TM más cercana a tu domicilio o ponte en contacto con nosotros en el teléfono **902 15 15 12** o en la dirección de email **comercial@tmgrupoinmobiliario.com**

TM GRUPO INMOBILIARIO