

SILENE

Costa Blanca Sur / Orihuela (Alicante)

URBANISATION



A home close to the sea & everything you need.

Residencial Silene gives you easy access to all the best Orihuela Costa has to offer. Its privacy, swimming pool (with jacuzzi) and proximity to various beaches makes it the ideal place to enjoy the hot summer months! Added advantages also include its location in a quiet residential area where you will find a wide variety of shops and services open all year round, together with two important shopping centres. What more could you ask for?

OPTIONAL FURNISHINGS



We offer you the chance to take possession of your property already fully furnished and equipped, with three attractive styles to choose from: Value Classic, Value Style of Premium. You'll be given keys to a new home ready to be enjoyed from the moment you open the door - a fully equipped kitchen; furniture; cutlery; pots & pans; television; curtains... even sheets on the beds and towels in the bathroom! In fact, all you need to do is bring your suitcase as we'll take care of the rest! If you want to give your home a unique finishing touch, we also have several decoration packages also available. Please ask for our latest catalogue!

THE SURROUNDING AREA



The Beaches

Silene is conveniently located close to various coves and beaches including: Punta Prima; La Zenia; Playa Flamenca; Cabo Roig; Cala Capitán & the beaches of nearby Torrevieja.

Golf courses

Close to Silene you will find various 18-hole golf courses, all open throughout the year and all with excellent reputations for the courses and quality such as Villamartin; Las Ramblas and Campoamor.

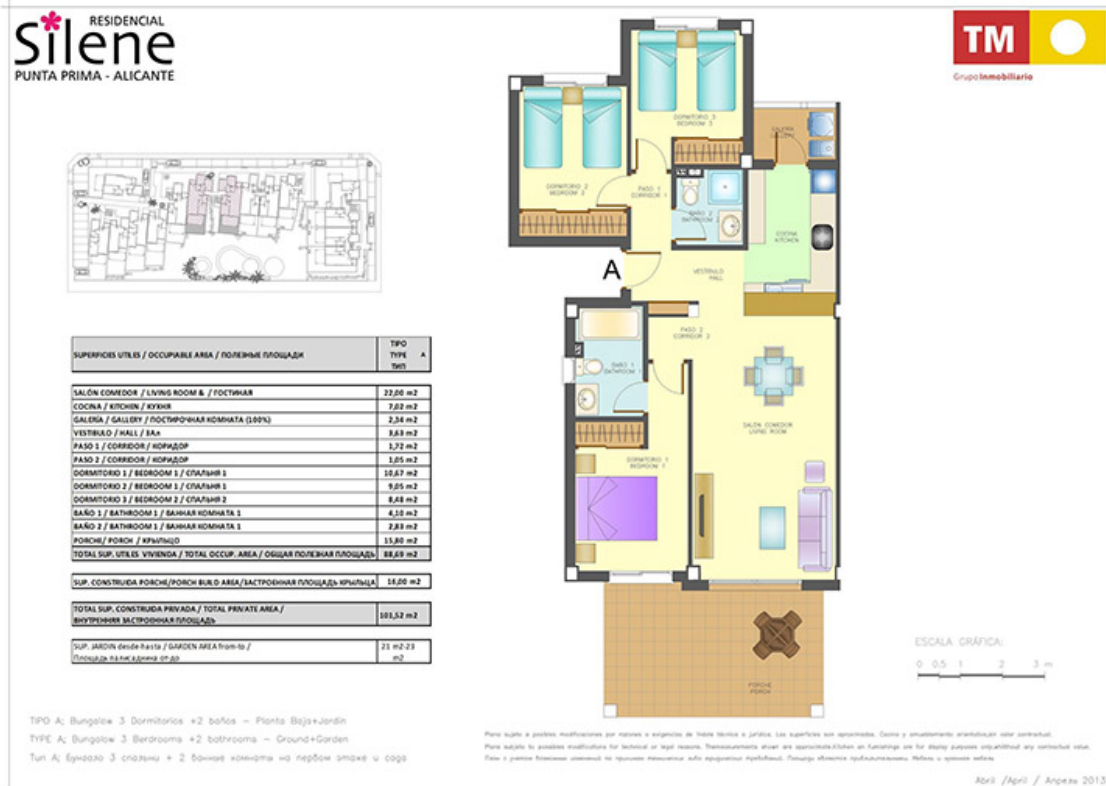
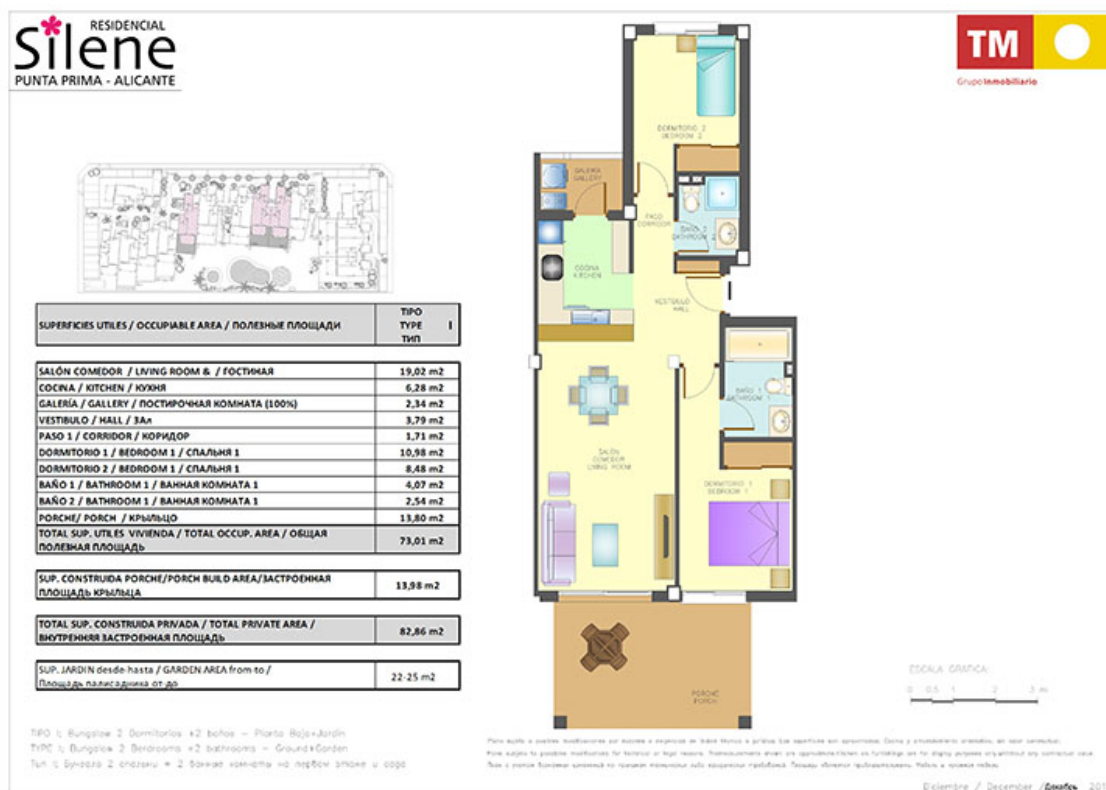
Amenities

The development is situated in an established residential area surrounded by all sorts of shops and services open all year round. There are also several important shopping centres nearby offering not only shops and restaurants, but also leisure activities etc including La Zenia Boulevard in Orihuela Costa and La Habaneras in nearby Torrevieja. The Hospital of Torrevieja is also located just 2 km from Silene.

Views from the properties

All apartments enjoy views of the pool and/or the public gardens which surround Residencial Silene.

PLANS



AERIAL VIEW



PLAN OF THE COMPLEX





PROPERTIES AVAILABLE

Type	Bedrooms	Bathrooms	Price range	m2
Parking	0	0	1.000€	12



Solicita información en la oficina de venta TM más cercana a tu domicilio o ponte en contacto con nosotros en el teléfono **902 15 15 12** o en la dirección de email **comercial@tmgrupoinmobiliario.com**

TM GRUPO INMOBILIARIO