

# PINARS DE MURADA R-12

Mallorca / Cala Murada (Manacor)

## URBANISATION



### **Bungalows located only 900 meters away from the beach**

Pinars de Murada R12 is a development located in a privileged location, Ideal to enjoy the Mediterranean life. Cala Murada belongs to Manacor district. The Residential conformed by 8 bungalows where you will enjoy to the fullest of its privacy, security and nice weather of Mallorca Coast. A Complex designed to offer you spaciousness and freedom thanks to its big gardens and solariums.

C/ Renania, S/N. Cala Murada (Mallorca)

## THE SURROUNDING AREA



### **The Beaches**

The residential is located 900 m from Cala Murada, and very close to every Manacor's coves: Cales de Mallorca, Calas Domingos Grand and Petit, Cala Mendiá, Cala Romantica, Cala D'Or, etc.

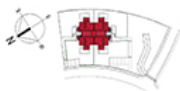
### **Golf courses**

In less than 10km you have Vall d'Or Golf. An amazing golf club with spectacular views of the Mediterranean Sea.

### **Amenities**

Enjoy typical Mallorcan restaurants, cafés and bars close to your home. You also have many services such as supermarkets, clinics Banks and shops. In addition, a bus service connects the urbanization with the Manacor train station, which you can catch a direct line to Palma de Mallorca.

## PLANS



#	NUTZFLÄCHE / SUPERFICIES ÚTILES / FLOOR AREA /	TYP TIPO TYPE
1	HALL / VESTIBULO / HALL /	2,75 m <sup>2</sup>
6	KÜCHE / COCINA / KITCHEN /	7,37 m <sup>2</sup>
7	WITTING / PASSAGE / GALLERY /	4,08 m <sup>2</sup>
8	Wohn- / Wohnzimmer / SALÓN / CONDO / LIVING-DINING ROOM /	20,38 m <sup>2</sup>
9	Schlafzimmer 1 / DORMITORIO 1 / BEDROOM 1 /	10,37 m <sup>2</sup>
10	Schlafzimmer 2 / DORMITORIO 2 / BEDROOM 2 /	10,36 m <sup>2</sup>
12	Badezimmer 1 / BAÑO 1 / BATHROOM 1 /	4,76 m <sup>2</sup>
13	Badezimmer 2 / BAÑO 2 / BATHROOM 2 /	3,88 m <sup>2</sup>
GESAMTE NUTZFLÄCHE / TOTAL SUP. ÚTILES / TOTAL FLOOR AREA /		64,26 m <sup>2</sup>
BESAUITE INNENFLÄCHE / SUP. CONSTRUIDA INTERIOR / BUILT INTERIOR AREA /		60,82 m <sup>2</sup>
17	BESAUITE VORHÄLLE 2 / SUP. CONSTRUIDA PORCHE 2 / BUILT PORCH 2 AREA /	12,30 m <sup>2</sup>
18	BESAUITE VORHÄLLE 1 / SUP. CONSTRUIDA PORCHE 1 / BUILT PORCH 1 AREA /	2,82 m <sup>2</sup>
19	BESAUITE PATIO / SUP. CONSTRUIDA PATIO / BUILT OPEN PATIO AREA /	3,18 m <sup>2</sup>
GESAMTE BESAUITE FLÄCHE / TOTAL SUP. CONSTRUIDA PREVISTA / TOTAL BUILT PRIVATE AREA /		18,30 m <sup>2</sup>
GARTENFLÄCHE vom - bis / SUP. JARDÍN desde-hasta / GARDEN AREA from-to		268 - 210 m <sup>2</sup>



## Pinars de Murada R12

Typ J: Bungalow. 2 Schlafzimmer + 2 Badezimmer. Erdgeschoss.

Tipo J: Bungalow. 2 dormitorios + 2 baños. Planta baja.

Type J: Bungalow. 2 bedrooms + 2 bathrooms. Ground Floor.

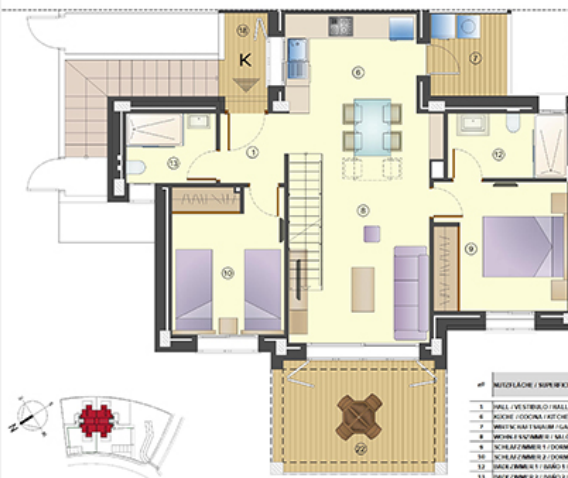


Plan unterliegt möglichen Änderungen aus technischen oder rechtlichen Gründen. Möbel und Küche, individuell, ohne Vorliegsort.

Plano sujeto a posibles modificaciones por razones o exigencias de índole técnica o jurídica. Las superficies son aproximadas. Cocina y amueblamiento orientados en valor comercial.

Plans subject to possible modifications for technical or legal reasons. The measurements shown are approximate. Kitchen and furnishing orientation without contractual value.

Juni / Junio / June 2021



## Pinars de Murada R12

Typ K: Bungalow. 2 Schlafzimmer + 2 Badezimmer. Erste Etage.

Tipo K: Bungalow. 2 dormitorios + 2 baños. Planta primera.

Type K: Bungalow. 2 bedrooms + 2 bathrooms. First floor



#	NUTZFLÄCHE / SUPERFICIES ÚTILES / FLOOR AREA /	TYP TIPO TYPE
1	HALL / VESTIBULO / HALL /	2,75 m <sup>2</sup>
6	KÜCHE / COCINA / KITCHEN /	7,37 m <sup>2</sup>
7	WITTING / PASSAGE / GALLERY /	4,08 m <sup>2</sup>
8	Wohn- / Wohnzimmer / SALÓN / CONDO / LIVING-DINING ROOM /	20,38 m <sup>2</sup>
9	Schlafzimmer 1 / DORMITORIO 1 / BEDROOM 1 /	10,37 m <sup>2</sup>
10	Schlafzimmer 2 / DORMITORIO 2 / BEDROOM 2 /	10,36 m <sup>2</sup>
12	Badezimmer 1 / BAÑO 1 / BATHROOM 1 /	4,76 m <sup>2</sup>
13	Badezimmer 2 / BAÑO 2 / BATHROOM 2 /	3,88 m <sup>2</sup>
GESAMTE NUTZFLÄCHE / TOTAL SUP. ÚTILES / TOTAL FLOOR AREA /		64,26 m <sup>2</sup>
BESAUITE INNENFLÄCHE / SUP. CONSTRUIDA INTERIOR / BUILT INTERIOR AREA /		60,82 m <sup>2</sup>
18	BESAUITE TERRASSE 1 / SUP. CONSTRUIDA DE TERRAZA 1 / BUILT TERRACE 1 AREA /	2,82 m <sup>2</sup>
19	BESAUITE TERRASSE 2 / SUP. CONSTRUIDA DE TERRAZA 2 / BUILT TERRACE 2 AREA /	12,30 m <sup>2</sup>
20	BESAUITE TERRASSE 3 / SUP. CONSTRUIDA DE TERRAZA 3 / BUILT TERRACE 3 AREA /	3,18 m <sup>2</sup>
GESAMTE BESAUITE FLÄCHE / TOTAL SUP. CONSTRUIDA PREVISTA / TOTAL BUILT PRIVATE AREA /		18,30 m <sup>2</sup>

Plan unterliegt möglichen Änderungen aus technischen oder rechtlichen Gründen. Möbel und Küche, individuell, ohne Vorliegsort.

Plano sujeto a posibles modificaciones por razones o exigencias de índole técnica o jurídica. Las superficies son aproximadas. Cocina y amueblamiento orientados en valor comercial.

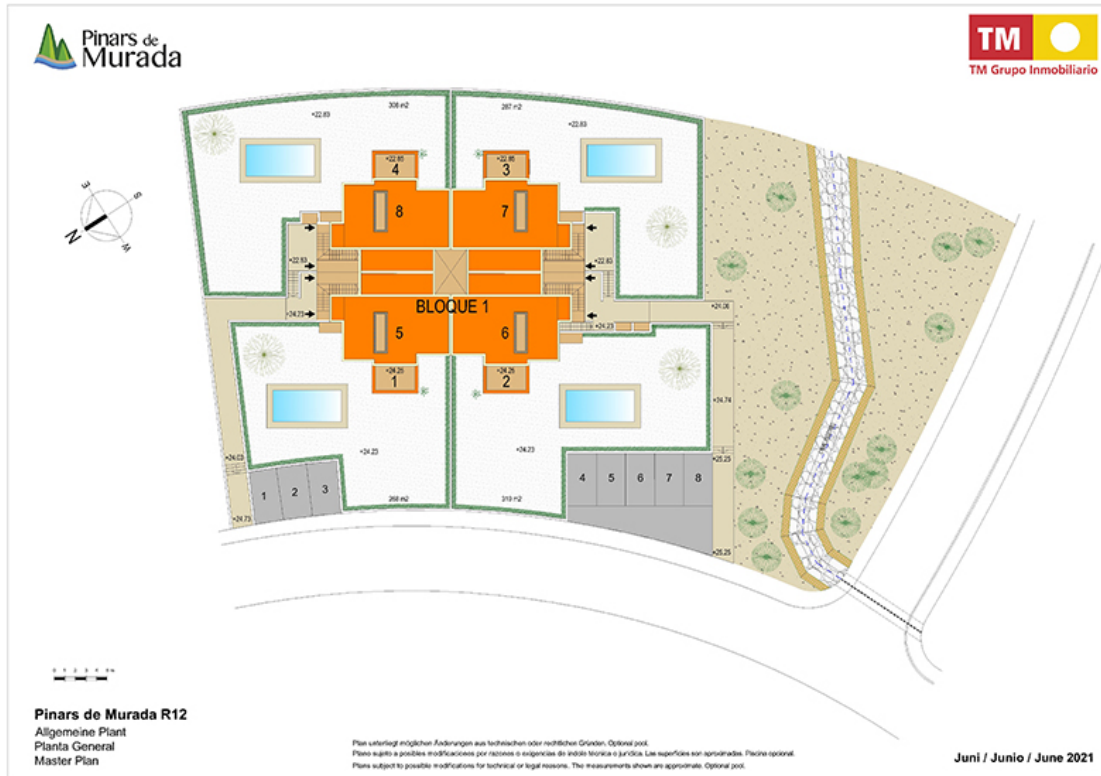
Plans subject to possible modifications for technical or legal reasons. The measurements shown are approximate. Kitchen and furnishing orientation without contractual value.

Juni / Junio / June 2021

## AERIAL VIEW



# PLAN OF THE COMPLEX





Solicita información en la oficina de venta TM más cercana a tu domicilio o ponte en contacto con nosotros en el teléfono **902 15 15 12** o en la dirección de email **comercial@tmgrupoinmobiliario.com**

**TM GRUPO INMOBILIARIO**