

PINARS DE MURADA R-3

Mallorca / Cala Murada (Manacor)

URBANISATION



Chalets and apartments with an avant-garde design

Pinars de Murada Deluxe has a design that combines functionality and modern-style architecture with the warmth of traditional Majorcan homes. A design in which natural light and the carefully chosen materials take centre stage, where the play of volumes generates double heights and attractive visual connections between spaces. A place where you can enjoy the fantastic Majorcan climate thanks to large scale windows, no differences in level, and outdoor structures that seem to prolong the indoor space, where the limits between inside/outside are skillfully combined. All this makes these villas and apartments something special and different. A whole new experience!

Carrer de Friül y Carrer de la Gascuny S/N. Cala Murada (Mallorca)

OPTIONAL FURNISHINGS



We offer you the possibility to enjoy your home from the moment you pick up your keys with a complete pack including all furniture and furnishings, a fully equipped kitchen with appliances and, of course, kitchenware and cutlery, cookware, tableware, bedding, TV, etc. so you don't have to worry about a thing!

THE SURROUNDING AREA



The Beaches

This residential estate is 900m from Cala Murada, and a stroll away from all the coves along the Manacor coast: Cales de Mallorca, Calas Domingos Grand y Petit, Cala Mendià, Cala Romántica, Cala D'Or, etc.

Golf courses

Only 10 km from the estate is the Vall D'Or Golf Course.

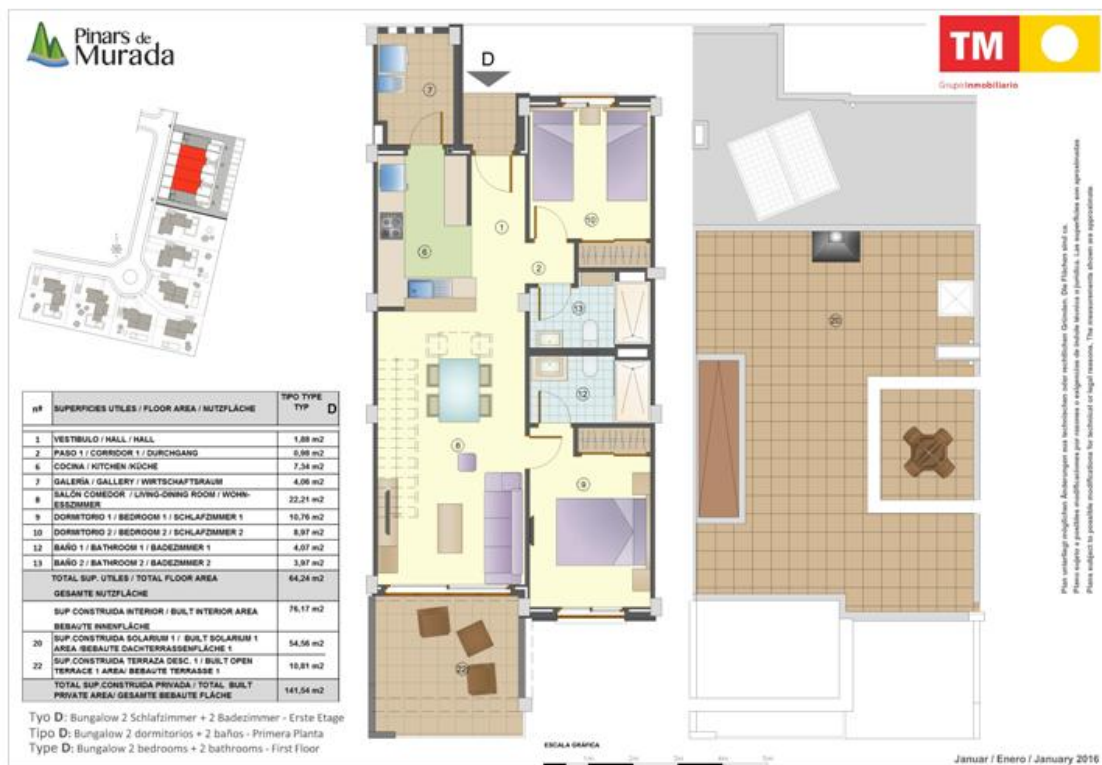
Amenities

Pinars de Murada has a Social Club with a large swimming pool with waterbeds and a natural lawn pool surround sized over 2,800m², with trees and brushwood parasols, café area with an open-air terrace, a children's playground, sauna, whirlpool and changing rooms. In addition, this enclave is quite close to the sports marinas of Porto Cristo and Portocolom. Nearby Cala Murada provides all the basic services to cover your daily needs: restaurants, supermarkets, banks, outpatients' clinic, post office, care hire, etc. There are taxis and bus services connecting the estate to Manacor, the town from which you can also catch the train direct to Palma de Mallorca.

Views from the properties

Depending on the location and orientation of the home, there may be views of municipal green zones, the pine forests and/or the swimming pool and social club.

PLANS



AERIAL VIEW



PLAN OF THE COMPLEX





PROPERTIES AVAILABLE

Type	Bedrooms	Bathrooms	Price range	m2
Bungalow	2	2	398.000€	95



Solicita información en la oficina de venta TM más cercana a tu domicilio o ponte en contacto con nosotros en el teléfono **902 15 15 12** o en la dirección de email **comercial@tmgrupoinmobiliario.com**

TM GRUPO INMOBILIARIO