

# RIOMAR HEALTHY LIVING

Costa Blanca Sur / Torre de la Horadada  
(Alicante)

## URBANISATION



**New building close to Mil Palmeras beach, between Campoamor and Torre de la Horadada.**

Riomar Healthy Living is the ideal place to enjoy your new home with a perfect location, services and facilities to guarantee you the well-being you deserve. The complex is very close to the Mil Palmeras beach, between Campoamor and Torre de la Horadada, in a natural and quiet environment. Riomar Healthy Living will dispose a total of 46 care apartments of 1 and 2 bedrooms with 1 or 2 bathrooms, and spectacular common areas with: swimming pool with elevator, fully equipped gym, community room, exercise room, beauty room and physiotherapy room.

## OPTIONAL FURNISHINGS



If you so wish, we can deliver your home fully furnished and equipped, with two furniture options: Aktual or L-Glance style. So you don't have to worry about anything. Please request the list of furniture and equipment of each home.

## THE SURROUNDING AREA



### The Beaches

One of the best, Blue Flag, beaches on the Mediterranean is just a few minutes from the development. There are several other beaches as well as the coves of Torre de la Horadada and Dehesa de Campoamor just a few kilometres away from the development.

### Golf courses

Riomar Healthy Living is in the perfect location for golf lovers. Within a 30-minute drive there are more than 10 magnificent golf courses to choose from in the provinces of Alicante and Murcia: Villamartín Golf, R.C.G. Campoamor, Las Colinas Golf & Country Club, La Marquesa Golf, Vistabella Golf, La Finca Golf, Las Ramblas Golf, Lo Romero Golf, Roda Golf, New Sierra Golf, Serena Golf...

### Amenities

The development is very close to Mil Palmeras beach and all its services. It's also within easy reach of the bars, restaurants, supermarkets, and pharmacies, etc. in the municipality of Pilar de La Horadada. Its prime location allows access to other leisure services in the surrounding area such as the Zenia Boulevard Shopping Centre (9 km) and the Dehesa de Campoamor Yacht Club. Furthermore, Torrevieja Hospital is only 14km away.

### Views from the properties

## PLANS



nº	SUPERFICIES ÚTILES / FLOOR AREA / SURFACES UTILES	TIPO A
8	SALON-COMEDOR-COCINA / LIVING DINING ROOM-KITCHEN / SALON- SALLE A MANGER-CUISINE	26,99 m <sup>2</sup>
9	DORMITORIO 1 / BEDROOM 1 / CHAMBRE 1	11,88 m <sup>2</sup>
12	BANO 1 / BATHROOM 1 / SALLE DE BAINS 1	6,29 m <sup>2</sup>
TOTAL SUP. ÚTILES / TOTAL FLOOR AREA / TOTAL SURFACES UTILES		45,07 m <sup>2</sup>
SUP. CONSTRUIDA INTERIOR / BUILT INTERIOR AREA / SURFACE CONSTRUITE INTERIEUR		51,93 m <sup>2</sup>
16	SUP. CONSTRUIDA PORCHE 1 / BUILT PORCH 1 AREA / SURFACE CONSTRUITE PORCHE 1	15,18 m <sup>2</sup>
22	SUP. CONSTRUIDA TERRAZA DESCUBIERTA 1 / BUILT OPEN TERRACE AREA 1 / SURFACE CONSTRUITE TERRASSE NON COUVERTEE 1	17,58 m <sup>2</sup>
TOTAL SUP. CONSTRUIDA PRIVADA / TOTAL BUILT PRIVATE AREA / TOTAL SURFACE CONSTRUITE PRIVATIVE		84,69 m <sup>2</sup>
SUP. CONSTRUIDA ZONAS COMUNES		12,44 m <sup>2</sup>

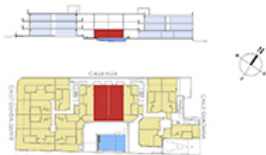
## TIPO/TYPE/TYPO A

Apartamento 1 Dormitorio + 1 baño - Planta Baja  
Apartment 1 Bedroom + 1 bathroom - Ground Floor  
Appartement 1 Chambre + 1 Salle de bains - Rez-de-chaussée

0 m 1 m 2 m 3 m

OCTUBRE / OCTOBER / OCTOBRE 2022

Para saber o posibles modificaciones por razones o exigencias de índole técnica o jurídica, las superficies son aproximadas. Cocina y baño construidos en obra contratada.  
Pour savoir si possibles modifications les raisons ou exigences d'ordre technique ou juridique, les surfaces des appartements, chambres et baignoires des la plans proposés, avec les dimensions réelles.  
Für wissen o möglichen Änderungen an Funktion des Bauteils aus technischen oder juristischen, die Flächen sind approximativ. Küche und badezimmer individuell, sind selbst konstruiert.



nº	SUPERFICIES ÚTILES / FLOOR AREA / SURFACES UTILES	TIPO G
8	SALON-COMEDOR-COCINA / LIVING DINING ROOM-KITCHEN / SALON- SALLE A MANGER-CUISINE	27,37 m <sup>2</sup>
9	DORMITORIO 1 / BEDROOM 1 / CHAMBRE 1	12,45 m <sup>2</sup>
10	DORMITORIO 2 / BEDROOM 2 / CHAMBRE 2	11,11 m <sup>2</sup>
12	BANO 1 / BATHROOM 1 / SALLE DE BAINS 1	5,19 m <sup>2</sup>
TOTAL SUP. ÚTILES / TOTAL FLOOR AREA / TOTAL SURFACES UTILES		56,03 m <sup>2</sup>
SUP. CONSTRUIDA INTERIOR / BUILT INTERIOR AREA / SURFACE CONSTRUITE INTERIEUR		74,45 m <sup>2</sup>
16	SUP. CONSTRUIDA PORCHE 1 / BUILT PORCH 1 AREA / SURFACE CONSTRUITE PORCHE 1	14,19 m <sup>2</sup>
TOTAL SUP. CONSTRUIDA PRIVADA / TOTAL BUILT PRIVATE AREA / TOTAL SURFACE CONSTRUITE PRIVATIVE		88,50 m <sup>2</sup>
SUP. CONSTRUIDA ZONAS COMUNES		18,22 m <sup>2</sup>

## TIPO/TYPE/TYPO G

Apartamento 2 Dormitorios + 1 baño - Planta Baja  
Apartment 2 Bedrooms + 1 bathroom - Ground Floor  
Appartement 2 Chambres + 1 Salle de bains - Rez-de-chaussée

0 m 1 m 2 m 3 m

OCTUBRE / OCTOBER / OCTOBRE 2022

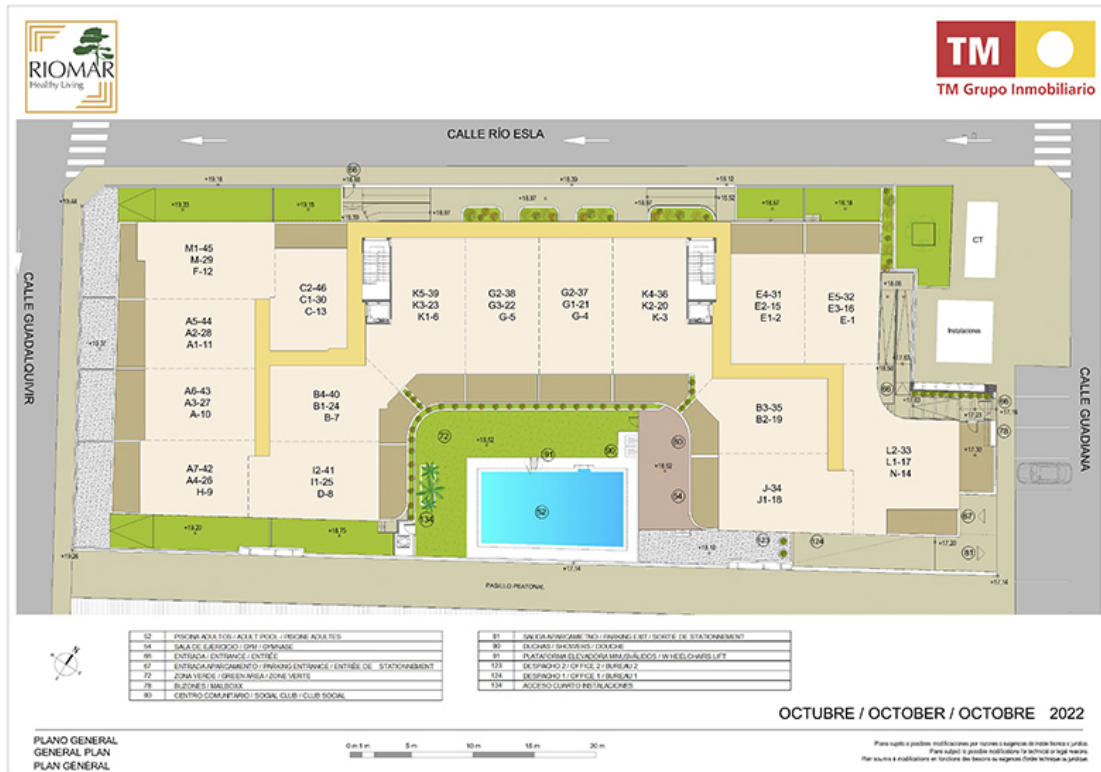
Para saber o posibles modificaciones por razones o exigencias de índole técnica o jurídica, las superficies son aproximadas. Cocina y baño construidos en obra contratada.  
Pour savoir si possibles modifications les raisons ou exigences d'ordre technique ou juridique, les surfaces des appartements, chambres et baignoires des la plans proposés, avec les dimensions réelles.  
Für wissen o möglichen Änderungen an Funktion des Bauteils aus technischen oder juristischen, die Flächen sind approximativ. Küche und badezimmer individuell, sind selbst konstruiert.



## AERIAL VIEW



# PLAN OF THE COMPLEX





# PROPERTIES AVAILABLE

Type	Bedrooms	Bathrooms	Price range	m2
Apartment	1	1	157.000€ - 182.000€	67 - 96



Solicita información en la oficina de venta TM más cercana a tu domicilio o ponte en contacto con nosotros en el teléfono **902 15 15 12** o en la dirección de email **comercial@tmgrupoinmobiliario.com**

**TM GRUPO INMOBILIARIO**